

Faith, Hope and Love

I made my own Love is 'Wheel'. You might like to make one too.

You will need:

- 2 pieces of card
- Felt pens
- Plate
- A split pin, or hair clip
- Ruler
- Sissors

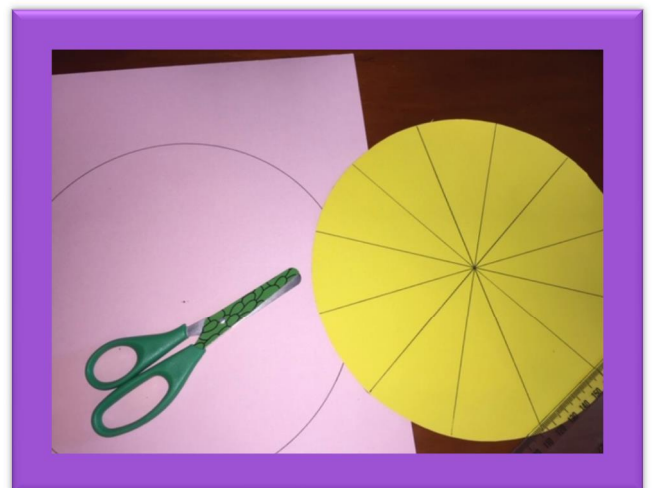
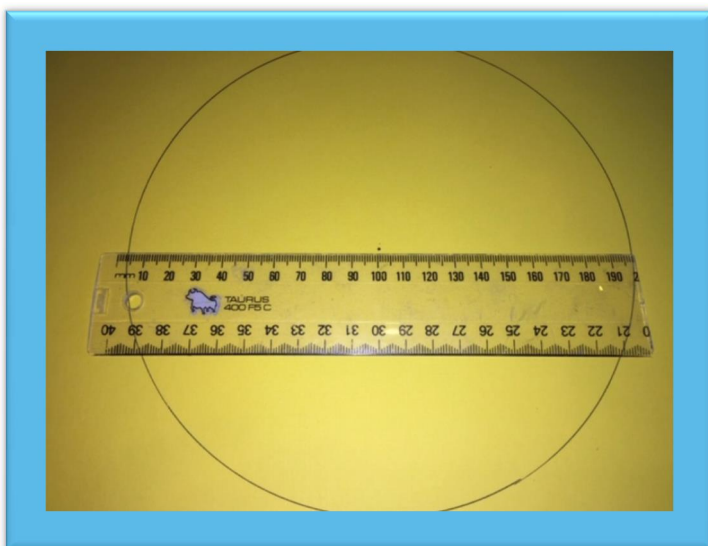
Step 1: Put your plate on your paper and draw around it to make a circle. Do the same on your 2nd piece of paper.



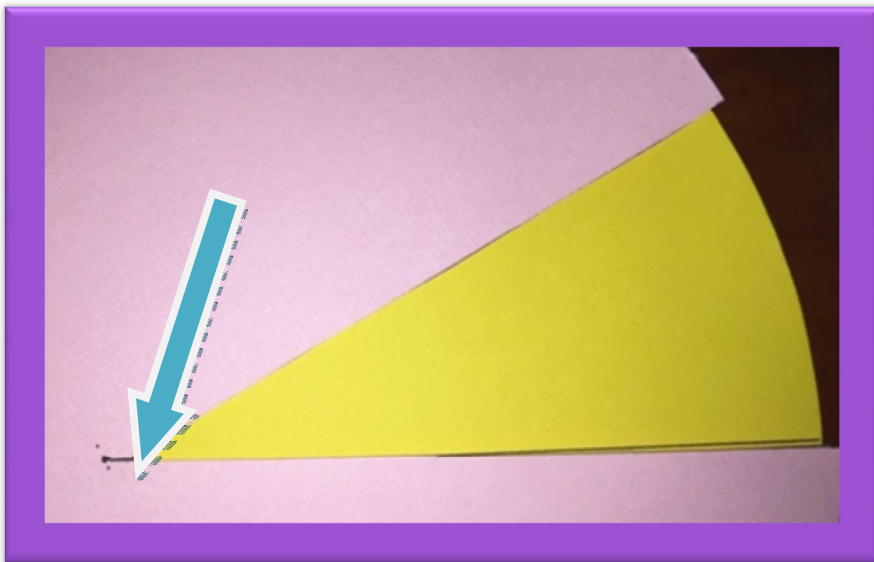
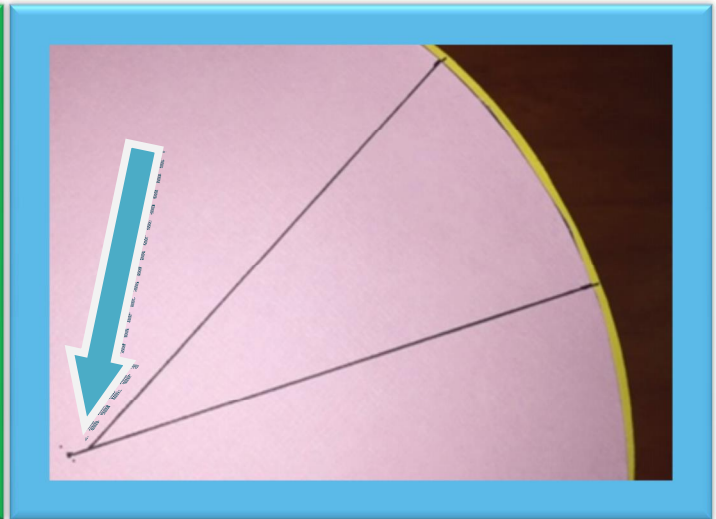
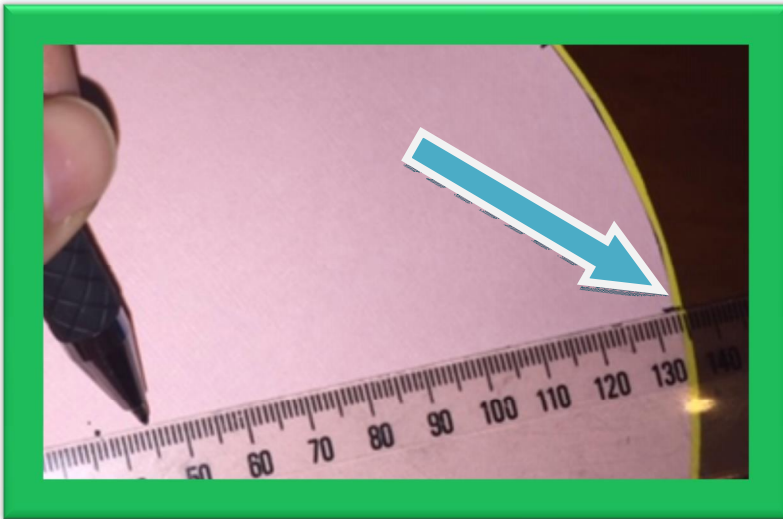
Step 2: Find the centre of both circles using a ruler. Put a dot in the centre.

Step 3: Cut your circles out.

Step 4: Mark out 12 segments using your ruler... it's like a pizza!



This next part you are making the window or mouth.



Step 5: Place your top circle over the bottom circle. Make sure you can see the yellow lines popping out.

Step 6: Draw a line from the centre dot to the line matching up on the bottom circle. See the picture above.

Step 7: Draw the top line making sure this line does NOT meet in the middle. Otherwise when you put your clip through, it won't spin or hold the top paper in place.

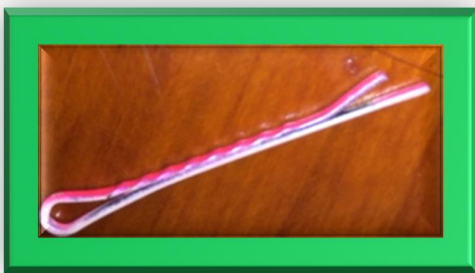


Step 8: Then cut out the window.

Step 9: Flip it over so you can't see your lines and decorate the face. Write 'Love Is...' on the front. I made my one look like a Pac Man.



Step 10: Write out what love is... see picture above. Decorate.



Step 11: Using a hair clip or split pin. Put the two pieces together. You are finished!

Check out the pictures below:



